

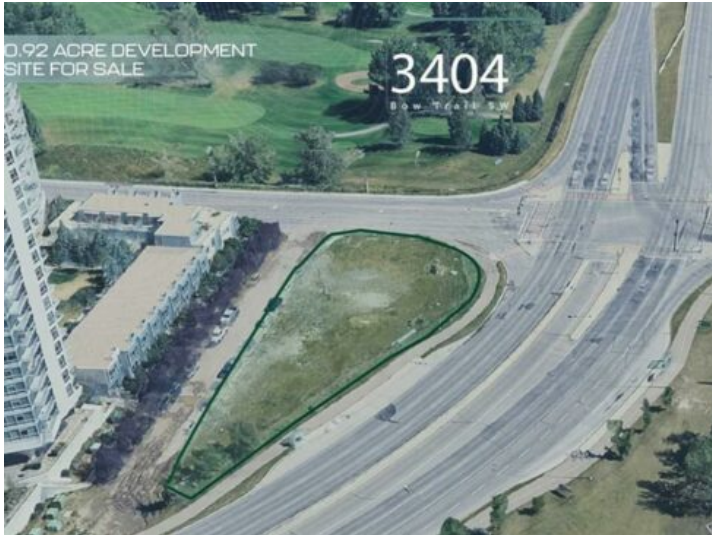


GRASSROOTS
REALTY GROUP

587-777-7276
yuri@grassrootsrealtygroup.ca

3404 Bow Trail SW
Calgary, Alberta

MLS # A2213750



\$3,400,000

Division: Spruce Cliff

Lot Size: 0.92 Acre

Lot Feat: -

By Town: -

LLD: -

Zoning: MU-1

Water: -

Sewer: -

Utilities: -

Click brochure link for more details. Strategically situated in a prime location, this site offers high-visibility and exposure to Bow Trail, making it a rare opportunity for investors and owner-users seeking a prime development site.