

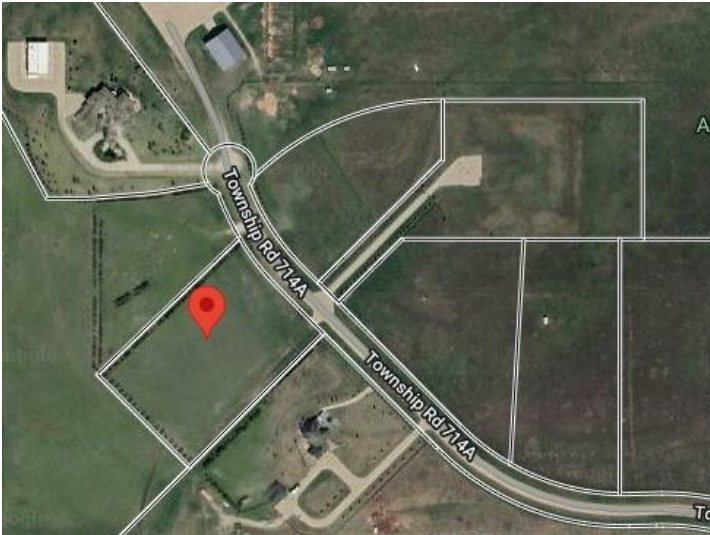


GRASSROOTS
REALTY GROUP

587-777-7276
yuri@grassrootsrealtygroup.ca

6, 714040 71 Range Road
Rural Grande Prairie No. 1, County of, Alberta

MLS # A2218276



\$289,000

Division: NONE

Lot Size: 5.28 Acres

Lot Feat: -

By Town: Grande Prairie

LLD: 26-71-7-W6

Zoning: CR 5

Water: Cistern

Sewer: -

Utilities: -

VACANT LOT AND IMMEDIATE POSSESSION!!! This 5.28 acre lot is ready to build on and zoned CR 5 country residential. Enjoy the convenience of being just minutes from Grande Prairie, where you'll find a variety of amenities to suit your lifestyle. With flexible options for build-to-suit and carrying options available, your vision can become a reality. Don't miss out on this incredible opportunity to invest in a community.