

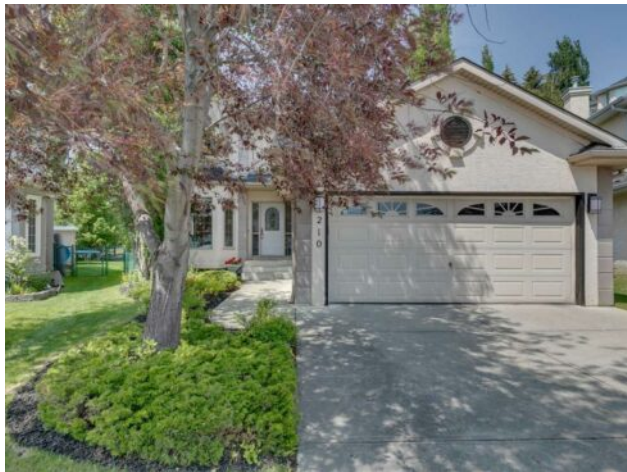


**GRASSROOTS**  
REALTY GROUP

**587-777-7276**  
yuri@grassrootsrealtygroup.ca

**210 Sienna Park Court SW**  
**Calgary, Alberta**

**MLS # A2234606**



**\$929,900**

<b>Division:</b>	Signal Hill		
<b>Type:</b>	Residential/House		
<b>Style:</b>	2 Storey		
<b>Size:</b>	2,341 sq.ft.	<b>Age:</b>	1997 (28 yrs old)
<b>Beds:</b>	4	<b>Baths:</b>	3 full / 1 half
<b>Garage:</b>	Double Garage Attached, Oversized		
<b>Lot Size:</b>	0.19 Acre		
<b>Lot Feat:</b>	Back Yard, Cul-De-Sac, Landscaped, Lawn, Pie Shaped Lot, Private, Treed		

<b>Heating:</b>	Forced Air, Natural Gas	<b>Water:</b>	-
<b>Floors:</b>	Carpet, Hardwood	<b>Sewer:</b>	-
<b>Roof:</b>	Asphalt Shingle	<b>Condo Fee:</b>	-
<b>Basement:</b>	Finished, Full	<b>LLD:</b>	-
<b>Exterior:</b>	Stone, Stucco, Wood Frame	<b>Zoning:</b>	R-CG
<b>Foundation:</b>	Poured Concrete	<b>Utilities:</b>	-
<b>Features:</b>	Built-in Features, Central Vacuum, Double Vanity, French Door, High Ceilings, Kitchen Island, Open Floorplan, Pantry, Walk-In Closet(s)		
<b>Inclusions:</b>	N/A		

PRICE REDUCED \$20,000 to \$929,900! This fully finished 2 storey in SIGNAL HILL is on a QUIET CUL-DE-SAC LOCATION. HUGE 8400 SF LOT, SUNNY NW FACING BACKYARD, and PRIVACY GALORE! Short walking distance to Battalion Park School, 69 ST LRT, Ernest Manning High School, Westside Rec Centre, and Westhills Shopping. Amazing floor plan with living & family rooms, kitchen and nook with hardwood floors, separate dining area, and private main floor office. The CURVED SPINDLE RAILING STAIRCASE leads to the upper level where you'll find 3 good sized bedrooms, 5 PCE primary ensuite and gas fireplace, and spare bathroom. Lower level is fully finished with a large recreation area, bedroom, and 3 PCE bath. The double attached garage is long enough to fit a full sized truck. So many extras in this home - Family room built-ins with gas fireplace, NEWER ROOF (2009), NEWER WATER HEATER (2019), CENTRAL AIR CONDITIONING, MAINTENANCE FREE DECK, landscaped beautifully, custom window coverings, the list goes on and on! This is an amazing opportunity with ONE OF THE LARGEST LOTS IN SIGNAL HILL! Request your showing today as this property is priced to sell at \$929,900 and will not last long!