

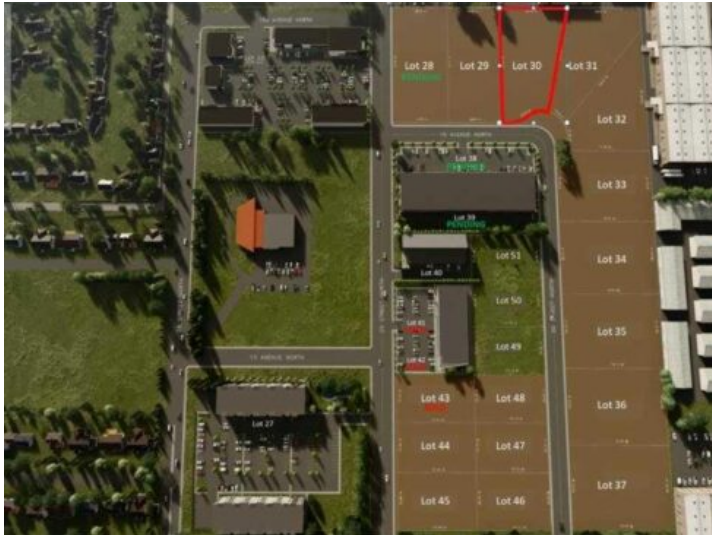


GRASSROOTS
REALTY GROUP

587-777-7276
yuri@grassrootsrealtygroup.ca

2971 15 Avenue N
Lethbridge, Alberta

MLS # A2241268



\$400,000

Division: Churchill Industrial Park

Lot Size: 1.07 Acres

Lot Feat: -

By Town: -

LLD: -

Zoning: DC

Water: -

Sewer: -

Utilities: -

Fibre Optic High Speed Internet Broadcast Business Park offers a unique mixed use project with land sales built to suit opportunities in a highly visible location. Individual lots of various sizes are available, ranging from 0.5 - 1.00 acres which can be combined to form a bigger parcel. The land is in close proximity to mature commercial and residential neighborhoods, including 100+ new residential units in the Broadcast Business Park. Excellent access from 28th Street North