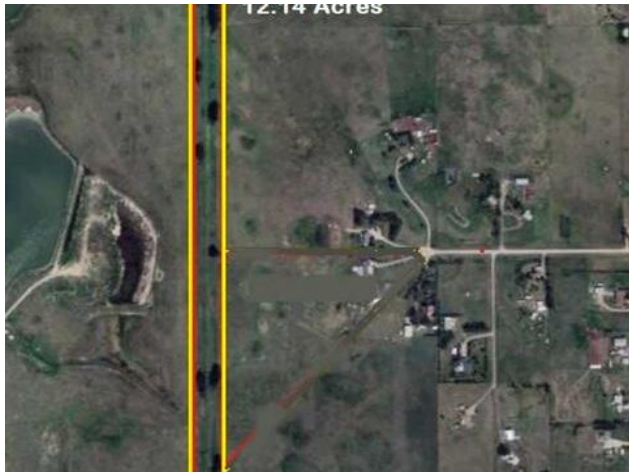




**Glenmore Trail  
Rural Rocky View County, Alberta**

**MLS # A2245466**



**\$399,900**

<b>Division:</b>	NONE	
<b>Cur. Use:</b>	-	
<b>Style:</b>	-	
<b>Size:</b>	0 sq.ft.	<b>Age:</b> -
<b>Beds:</b>	-	<b>Baths:</b> -
<b>Garage:</b>	-	
<b>Lot Size:</b>	12.14 Acres	
<b>Lot Feat:</b>	-	

<b>Heating:</b> -	<b>Water:</b> -
<b>Floors:</b> -	<b>Sewer:</b> -
<b>Roof:</b> -	<b>Near Town:</b> Langdon
<b>Basement:</b> -	<b>LLD:</b> 25-23-27-W4
<b>Exterior:</b> -	<b>Zoning:</b> AG
<b>Foundation:</b> -	<b>Utilities:</b> -
<b>Features:</b> -	

**Major Use:** Mixed

Abandoned railroad track. Ties removed 25 yrs ago. 120' wide by 5280', (120' x 1 Mile) designated as agriculture. Could be built on or used as road allowance subject to county approval. Many possible uses