



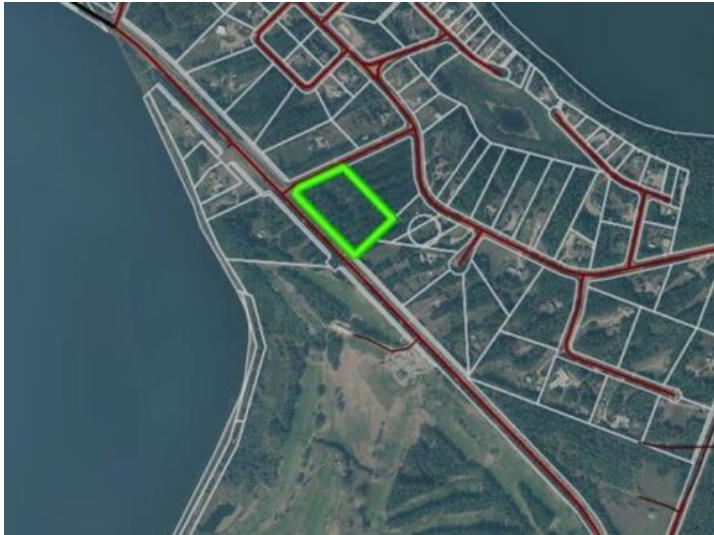
GRASSROOTS

REALTY GROUP

587-777-7276
yuri@grassrootsrealtygroup.ca

101, 67325 CHURCHILL PARK ROAD
Rural Lac La Biche County, Alberta

MLS # A2281424



\$375,900

Division: NONE

Lot Size: 5.54 Acres

Lot Feat: -

By Town: -

LLD: -

Zoning: Country Residential

Water: -

Sewer: -

Utilities: -

Lakeview Estates 5.54 acre fully serviced lot. This is a rare property being one of the largest serviced properties in Lakeview estates. Across from the Lac La Biche Golf Club . 5 minutes from lac La Biche schools and shopping and one minute from the Lake. Walking trails and boat launch close by as well as back country lake, quadding and hunting grounds minutes from your front door.