



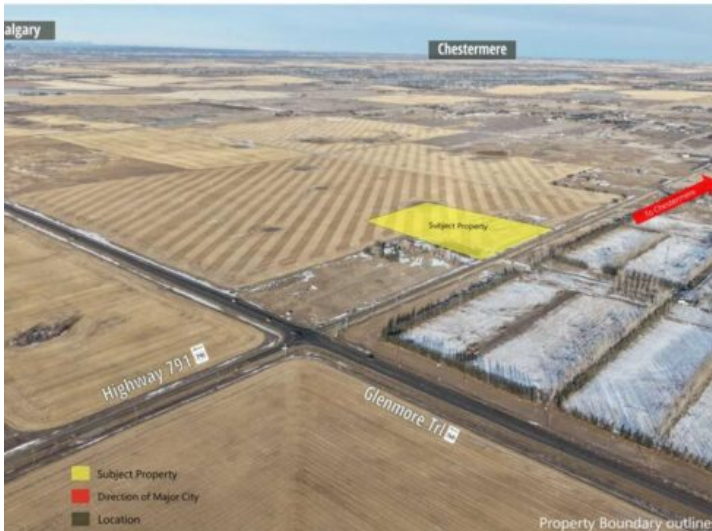
GRASSROOTS

REALTY GROUP

587-777-7276
yuri@grassrootsrealtygroup.ca

**Glenmore Trail and Range Road 280
Rural Rocky View County, Alberta**

MLS # A2287361



\$995,000

Division: NONE

Lot Size: 20.00 Acres

Lot Feat: -

By Town: Chestermere

LLD: 25-23-28-W4

Zoning: A-small

Water: Well

Sewer: -

Utilities: Electricity

20 acres of vacant land on Glenmore Trail and Range Road 280 (HWY 791) with 730 feet on paved Road Frontage with nice City, Downtown and Mountain View. Potential further Subdivision for walkout houses.