



**GRASSROOTS**  
REALTY GROUP

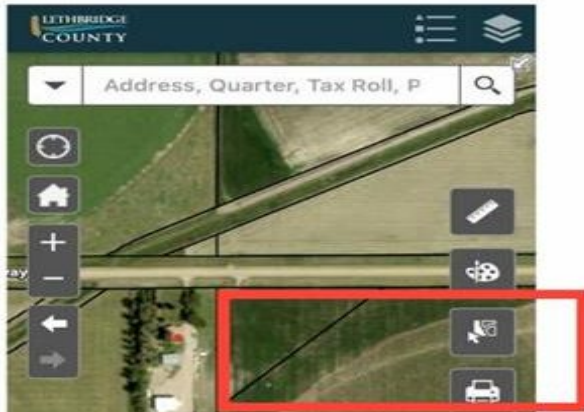
587-777-7276  
yuri@grassrootsrealtygroup.ca

**Hwy 512**  
**Rural Lethbridge County, Alberta**

**MLS # A2318417**

options (i.e. road bans).

[View larger map](#)



**\$329,000**

**Division:** NONE

**Lot Size:** 2.99 Acres

**Lot Feat:** -

**By Town:** Lethbridge

**LLD:** 32-20-8-W4

**Zoning:** AG

**Water:** None

**Sewer:** -

**Utilities:** -

This is a civil enforcement sale. Property is triangle shaped 2.99 acres with no known improvements. Located just off Hwy 512 just minutes East of Lethbridge. Great building site.