



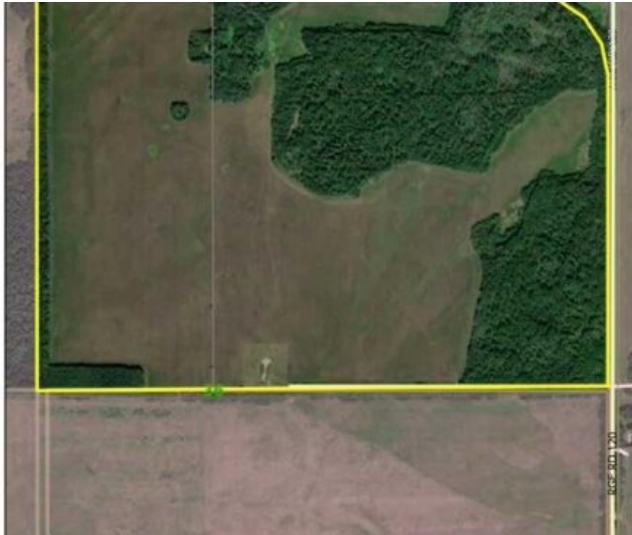
GRASSROOTS

REALTY GROUP

587-777-7276
yuri@grassrootsrealtygroup.ca

**Township Road 740
Rural Grande Prairie No. 1, County of, Alberta**

MLS # A2326481



\$530,000

Division: NONE

Lot Size: 225.82 Acres

Lot Feat: -

By Town: Hythe

LLD: 36-73-12-W6

Zoning: Ag

Water: None

Sewer: -

Utilities: -

Opportunities like this don't come along very often! This exceptional 225-acre property, spanning 2 quarter sections on one title, offers possibilities of productive farmland, pasture, recreational opportunities, or excellent building sites. Whether you're looking to expand your farming operation, establish a livestock enterprise, build your dream country home, or invest in a versatile land holding, this property deserves your attention. Approximately 130 acres have been broken and consist of good-quality farmland. While the land has not been cultivated for several years, it has been maintained through annual hay production, offering excellent potential to return to crop production or continue as productive forage land. The balance of the property provides pasture, natural habitat, and recreational enjoyment for hunting, hiking, or simply appreciating the peaceful country setting. Conveniently located just one mile from pavement, the property enjoys good year-round road access and is only 8 miles from the Hamlet of Hythe and 44 miles from Grande Prairie. Power is available along the property boundary, and the area is known for good water wells, making this an ideal location to build your future home or farmstead.