



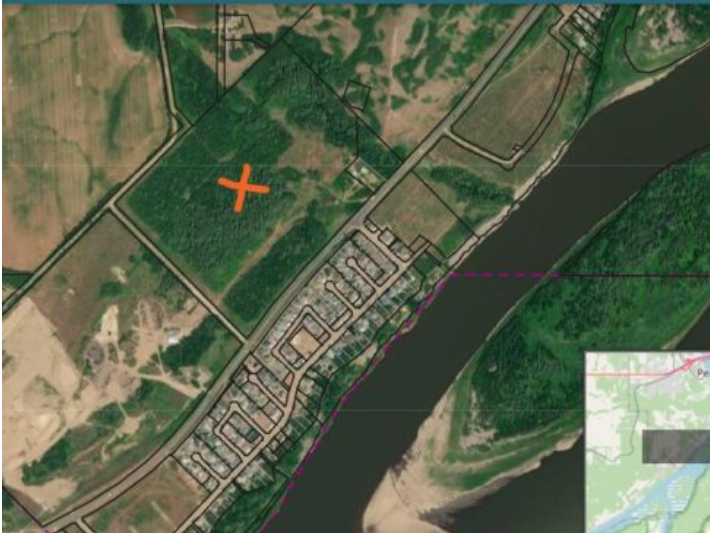
GRASSROOTS

REALTY GROUP

587-777-7276
yuri@grassrootsrealtygroup.ca

92 Street
Peace River, Alberta

MLS # A2015061



\$399,000

Division: Shaftesbury Settlements

Lot Size: 76.69 Acres

Lot Feat: -

By Town: -

LLD: -

Zoning: R1-A

Water: -

Sewer: -

Utilities: -

Where else in Peace River can you find 76.69 acres sitting up on a hill looking out towards the river? This lot offers all of that and more. Just a short drive down Shaftesbury Trail and sitting up overlooking Shaftesbury Estates, you get this wonderfully treed and private parcel of land. Adjacent the road leading to Westbrook Estates and the Westhill, you have good accessibility and easy access. The law is raw in its current state but buy this and sit on it and watch it turn into a desirable residential subdivision one day or just buy it and enjoy it all to yourself. Either way, it is a unique parcel of land that does not come on the market everyday!