



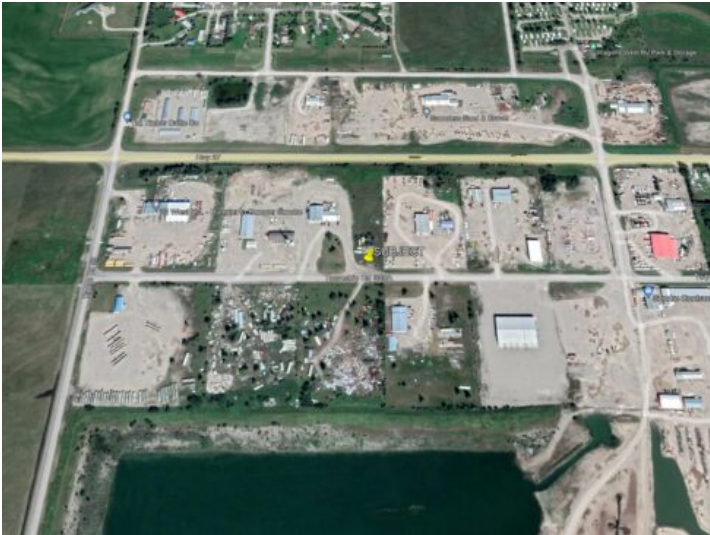
**GRASSROOTS**

REALTY GROUP

587-777-7276  
yuri@grassrootsrealtygroup.ca

16, 5445 HWY 584  
Rural Mountain View County, Alberta

MLS # A2043070



**\$399,900**

Division: NONE

Lot Size: 2.03 Acres

Lot Feat: -

By Town: Sundre

LLD: 32-32-5-W5

Zoning: I

Water: -

Sewer: -

Utilities: -

2.02 Acre fully serviced commercial lot right on the SW edge of Sundre Town Limits. large industrial park Backing onto HWY 584 only 1 km to town center. This industrial park is amongst several other industrial areas, with business including Oilfield services, Soil services, Contractors, Mechanical, Transport, etc. This lot was formerly a Commercial card lock gas pump. Perfect opportunity to start or move your business to a very well-established business park. Sundre has seen progressive growth and continues to be a great location for Industry.