



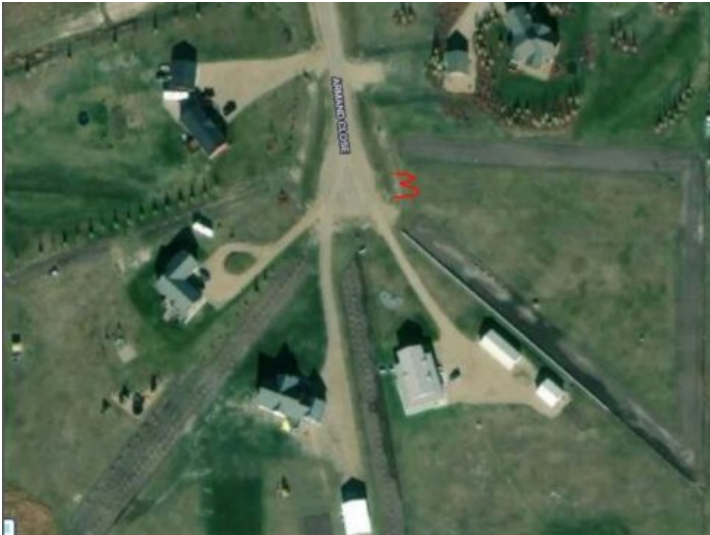
GRASSROOTS

REALTY GROUP

587-777-7276
yuri@grassrootsrealtygroup.ca

3 Armand Close
Rural Stettler No. 6, County of, Alberta

MLS # A2125434



\$135,000

Division: Carlisle Estates

Lot Size: 2.99 Acres

Lot Feat: -

By Town: Stettler

LLD: 35-38-20-W4

Zoning: CR-E

Water: -

Sewer: -

Utilities: -

Visit REALTOR® website for additional information. Ideally Located southwest of Meadowlands in Carlisle Estate just outside of Stettler, AB. Close to sports fields, Walmart, West Stetter Park, and many other amenities. School bus services. This Lot is 2.99 Acres, with plenty of open space, lilacs, and spruce trees planted around perimeter. Located in established subdivision serviced to property line: Underground power, gas, and phone. Needs well & sewer. No mobiles.