



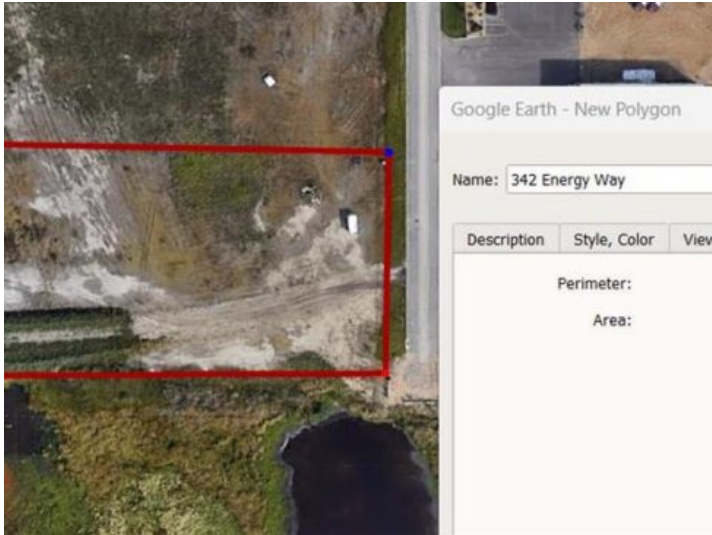
GRASSROOTS

REALTY GROUP

587-777-7276
yuri@grassrootsrealtygroup.ca

342 Energy Way
Rural Red Deer County, Alberta

MLS # A2174348



\$560,000

Division: Gasoline Alley

Lot Size: 2.85 Acres

Lot Feat: -

By Town: Red Deer

LLD: 28-37-27-W4

Zoning: BSI

Water: -

Sewer: -

Utilities: -

This GREAT parcel has no limit to the possibilities. 2.8 acres of vacant ground that is ready for a new business or an expanding business. Minutes from Highway 2 and easy access to Red Deer south end businesses in minutes!! The Seller is willing to do a Build To Suit or even vendor financing on vendor approval.