

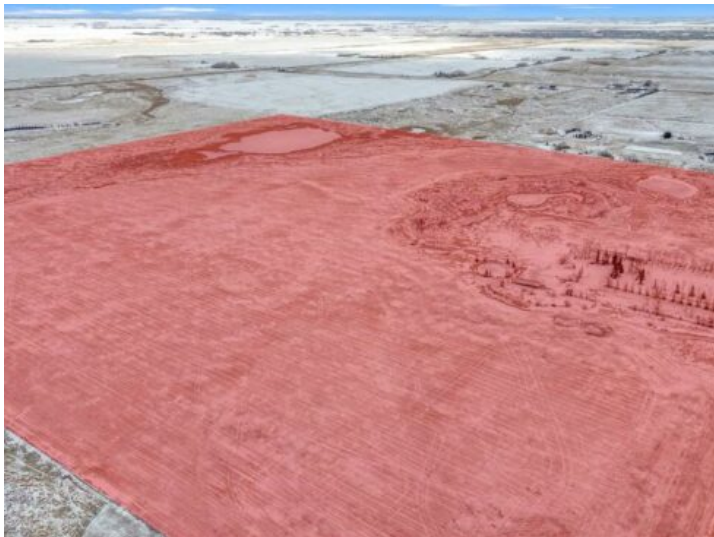


GRASSROOTS
REALTY GROUP

587-777-7276
yuri@grassrootsrealtygroup.ca

240206 vale view Road
Rural Rocky View County, Alberta

MLS # A2189899



\$3,188,888

Division: NONE

Lot Size: 160.00 Acres

Lot Feat: -

By Town: Chestermere

LLD: 3-24-27-W4

Zoning: A-GEN

Water: None

Sewer: -

Utilities: -

160 (+/-) acre parcel of land designated A-Gen, APPROXIMATELY 20 MINUTES TO CALGARY CITY LIMITS & 10 MINUTES TO CHESTERMERE CITY LIMITS AS WELL AS LANGDON CITY LIMITS! This parcel has a lot of potential with its location and size for future development. Directions: Travel east on Highway 1 (16 Ave) from Calgary, past Chestermere. Turn south on Highway 9, take the first right onto Township Rd 242, and follow west to Vale View Road (no sign on property). Contact your favorite realtor for a viewing today!